



SOUTHWEST CHAMBER MUSIC



EDUCATION & COMMUNITY PROGRAMS

2500 E. Colorado Blvd., Mezzanine Pasadena, CA 91107-6654 (626) 685-4455 Fax (626) 685-4458

www.swmusic.org

OUR MISSION

Southwest Chamber Music's mission is to provide the Southern California and international music communities with concert, recording, and educational programming that reflects the vast diversity of art music from around the world.

OUR EDUCATION MISSION

Our educational mission is to educate all age groups for appreciation of chamber music with programs of depth & quality.

ABOUT US



Founded in 1987, two-time Grammy® Award-winning Southwest Chamber Music is a dual-focused organization presenting innovative chamber music performances and ground-breaking educational programs. Southwest Chamber Music is one of the most active chamber music ensembles in the United States, presenting concert series throughout Los Angeles County. The ensemble provides weekly music education programs in the Los Angeles and Pasadena Unified School Districts with *Project Muse* in-school concerts and a *Mentorship Program*. Community events include the popular *Music Unwrapped* Free Family Series for students of all ages and *Blendings: Wine and Music* open rehearsals.

WHO WE SERVE

Southwest Chamber Music's concert and educational programs serve over 15,000 people annually in Los Angeles County. Our local audiences represent a wide cross-section of Los Angeles County's ethnically and economically diverse population. We also reach an international audience through our recordings, tours and cultural exchanges.

Southwest Chamber Music is a reflection of the people of Southern California. We regularly perform the music of Asian, Latin, and African-American composers, and we have a long history of performing music written by women. Our programming focus on underserved communities necessitates going directly into the community for educational activities. We are committed to serving our community through the presentation of music that reflects the diversity of Southern California.

SCHOOL PROGRAMS

Professional musicians in the classroom...

Mentorship Program



Mentorship Program provides in-school orchestra and chamber music coaching for students 12-18. Students develop their instrumental skills through work with professional musician mentors from Grammy-winning Southwest Chamber Music. Mentors work with small groups of students from each orchestra section, focusing on orchestra music while helping each student develop their individual skills.

Additional chamber music sessions for selected students focus on teaching ensemble skills, culminating in special school and community performances. The Mentors may provide advice and recommendations for college music scholarships.

- ◆ The 16-week long program at each school is divided into two 8-week sessions of vocational music training with orchestral sectional rehearsals and the option of chamber music coaching sessions.
- ◆ We provide up to 6 professional musicians for 60-minute coaching sessions weekly per school.
- ◆ The *Mentorship Program* for 16 weeks is valued at \$20,000 per school; schools contribute a portion of this fee, which is supplemented by private and foundation support.

Examples of programs include:

Orchestra Section Coaching – Mentors visit a school during orchestra period, up to 16 weeks during the school year. With the orchestra teacher's input, the Mentor works with small groups of students, each of the sections of the orchestra, on the orchestra music. The Mentors demonstrate bowings, fingerings, and work with the students to help them play their orchestra part as well as possible. The Mentor determines other technical work necessary to help the students build their overall skills, and they divide the session between this and the orchestra work. We can provide one Mentor each for Violin I, Violin II, Viola, Cello, Double Bass (or combine sections if there are not enough students on each instrument), percussion, woodwinds and brass by section or individual instruments.



Chamber Music – with input from the orchestra teacher, students form trios, quartets or larger ensembles. These groups receive a Mentor coach for chamber music repertory that is chosen to help build ensemble and individual skills. Group work culminates with performances on school programs or at community venues. The groups meet either during a lunch/free period, or after school. Mentored

chamber music ensembles have performed at Borders, Pasadena City Hall, fundraising events and school functions, and have also appeared in side-by-side concerts on Southwest Chamber Music concerts.

Scholarship Lessons – upon request, Mentors may be asked to provide private lessons during and after school hours for serious music students.

Master Classes

Master Classes are offered by members of Grammy-winning Southwest Chamber Music on string, woodwind, percussion, and brass instruments, as well as voice and piano. Most of our musicians are noted teachers in the area, serving on the faculty at UCLA, Azusa University, Chapman University, Cal State University campuses, Pasadena Conservatory, USC and others. Master Classes involve a class of all students on one instrument, or one family of instruments, potentially open to all of the music students. A group of students perform individually for the musician in front of the other students, and receive a short lesson or coaching. The session lasts from 1-3 hours and may be either during or after school. The length of the Master Class depends on the number of participating students.



“The students at Mark Keppel High School (Alhambra) have grown in musicianship since our partnership with Southwest Chamber Music. The Orchestra students in particular are playing with better intonation and tone quality, note accuracy, and musical expression. They are also gaining in confidence as a result of the personal mentoring they are receiving. I am learning more about string technique each week I observe and interact with the mentors.”

-Dr. Carla Bartlett (2007 Music Center Bravo Award Winner), Mark Keppel High School

Project Muse

In-school concerts

Project Muse in-school concerts are an opportunity for students 12-18 to gain an appreciation for music. Aligned with the California State Standards, the programs feature music from all historical periods and styles. Programs also draw connections between music and other subjects, such as history, math, English, poetry, drama and science.

The musical ensembles range from 1-6 players, drawn from our Grammy-winning roster. Every program features a lively question and answer period, which gives students the chance to interact with the players. Each participating school may engage the ensembles for repeat visits, allowing the students to build their listening and deportment skills while increasing their musical knowledge.



- ◆ Southwest Chamber Music programs 4 *Project Muse* concerts per year for each participating school.
- ◆ Teachers receive a *Project Muse* Resource Guide with California State Standard connections and a list of vocabulary to prepare their students for the concert, including follow-up suggestions.
- ◆ *Project Muse* in-school concerts are valued at \$15,000 for 4 programs; schools contribute a portion of this fee, which is supplemented by private and foundation support.



“Southwest’s educational programs give non-music students a sophisticated introduction to the world of classical music.”

-Music Director,
John Muir High School

2008-2009 Project Muse Programs

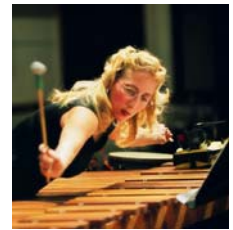
The "Classic" Guitar



Internationally renowned guitarist John Schneider will guide students through a journey to discover the evolution of the classical guitar and its immense repertoire. The host of the popular "*Global Village*" program on KPFK, Mr. Schneider will present compositions from the past four centuries, including compositions by John Dowland, J.S. Bach, Fernando Sor, Mauro Giuliani, and Heitor Villa-Lobos. Discussions with the students are always lively!

Violin / Marimba Duo

Violinist Shalini Vijayan and percussionist Lynn Vartan perform the work of Mexico City composer Gabriela Ortiz. One of the most exciting young contemporary composers to come from Mexico, Ortiz combines musical tradition and the avant-garde to create rich compositions that often tell stories of a folk, personal, or political nature. Southwest musicians Vijayan and Vartan have a long history of collaborating with each other and bring an interactive and exciting performance to students.



American String Quartets



Southwest Chamber Music's own string quartet performs two works influenced by American faith, compositions by Charles Ives and Wadada Leo Smith. Ives' *String Quartet No.1, "From the Salvation Army"* is strongly influenced by Protestant hymn-tunes of New England, while Wadada Leo Smith's *Black Church, First Gathering of the World Spirit* celebrates the struggle and achievements of the Black Church.

The Music of Toru Takemitsu



Toru Takemitsu was one of Japan's most famous celebrities and one of the major composers of the 20th century. His career was inspired by everything from traditional Japanese folk music, classic western pop-melodies, electronic sounds, and the natural world. Also a well-known film composer, Takemitsu collaborated and took influence from artist contemporaries around the world.

FAMILY & COMMUNITY PROGRAMS

Music Unwrapped

Free Family Series



Free of charge, and lots of fun, *Music Unwrapped* Free Family Concerts are a great way for the entire family to learn about a wide variety of music. Performed at community venues throughout Los Angeles County, the hour long programs are designed to entertain and educate audiences on such elements of music as melody, harmony, instrumentation and structure. Varied programs feature composers and virtuoso performers who “unwrap” the music through insights into the preparation and performance of the works presented, how instruments work, and lively interaction with the audience. Each family is given an instructional guide containing program content, listening lists, vocabulary and follow-up activities. Because the ensembles are small, each community site is encouraged to engage the ensembles for repeat visits, maximizing musical exposure through varied repertory.

Speaker Series

Southwest Chamber Music staff is available to speak and play samples of our CD's at your function. Past event appearances have included after-school programs, youth groups, concierge fairs, library groups, social service organizations such as the Pasadena Senior Center, and community organizations such as the Chinese-American Citizens Alliance and Rotary Club.



“Southwest reaches out to its community with its meaningful education programs.”

-Mark Swed, Los Angeles Times

COLLEGE & ADULT PROGRAMS

Internships

Southwest Chamber Music provides opportunities for a limited number of student internship positions each year. Interns must possess excellent computer skills, a strong interest and enthusiasm for classical music, self-transportation, and the ability to work flexible hours, including occasional evenings and weekends.

Southwest Chamber Music is also a participant in the LA County Arts Commission's Summer Internship Program. For more information, please see <http://www.lacountyarts.org/internship.html>.

Pre-concert Talks

Join us before many of our concerts for a short informative talk with featured musicians and composers, led by Grammy Award-winning Artistic Director Jeff von der Schmidt. These talks are a perfect way to learn about each concert's interesting perspective, which enhances your concert experience.



Podcasts, Web Video Series, Program Notes

Also available before each concert are Podcasts, video previews, and advance Program Notes by Jeff von der Schmidt. Please visit our website www.swmusic.org to find out more about our Podcasts and other special internet links and resources.



Southwest Chamber Music's educational programs are funded in part by the B.C. McCabe Foundation, California Arts Council, The Capital Group Companies Charitable Foundation, D'Addario Foundation for the Performing Arts, Dwight Stuart Youth Foundation, Frieda C. Fox Family Foundation, Green Foundation, James Irvine Foundation, Lluella Morey Murphey Foundation, The Mari and Edmund D. Edelman Foundation for Music and the Performing Arts, Metropolitan Associates, Pasadena Arts & Culture Commission and the City of Pasadena Cultural Affairs Division, Pasadena Educational Foundation, Rose Hills Foundation, Rotary Club of Pasadena, Sidney Stern Memorial Trust, Supervisor Michael Antonovich, Weingart Foundation, Wells Fargo Foundation.